

DATI TECNICI

Velocità di rotazione	16 sec/360°
Velocità di trasporto max	1,8 km/h
Inclinazione di risalita max	30°
Capacità impianto idraulico	145 l
Tipo di pompa	A portata variabile
Pressione di sistema	18 MPa
Pressione aumentata all'accessorio	24 MPa
Portata della pompa 50 Hz	115 l/min
60 Hz	130 l/min
Tecnologia di alimentazione	SmartPower™
Tipo di motore elettrico	ABB
Potenza*	41 kW
Dimensione del fusibile raccomandata*	63 A
Dispositivo di avviamento	Soft start/Direct start
Tipo di comando	SmartRemote™, portatile
Codice segnale	Digitale
Trasferimento	Radiocomando professionale/cavo
Portata radiocomando	Max 300 m
Peso della macchina**	5200 kg
Peso raccomandato dell'accessorio	700 kg
Livello di potenza sonora L _{WA} ***	100 dB(A)

*Valido per 400 V/50 Hz e 440 V/60 Hz

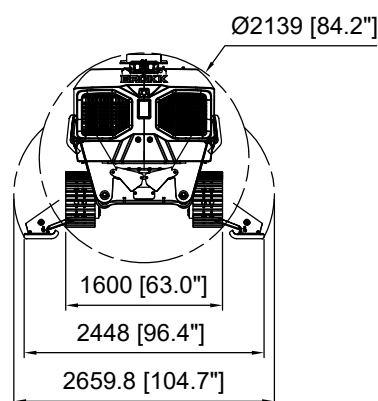
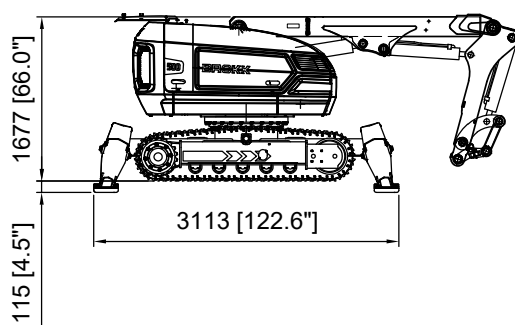
**Esclusi optional e accessorio

***Misurato ai sensi della direttiva 2000/14/CE, escl. accessorio

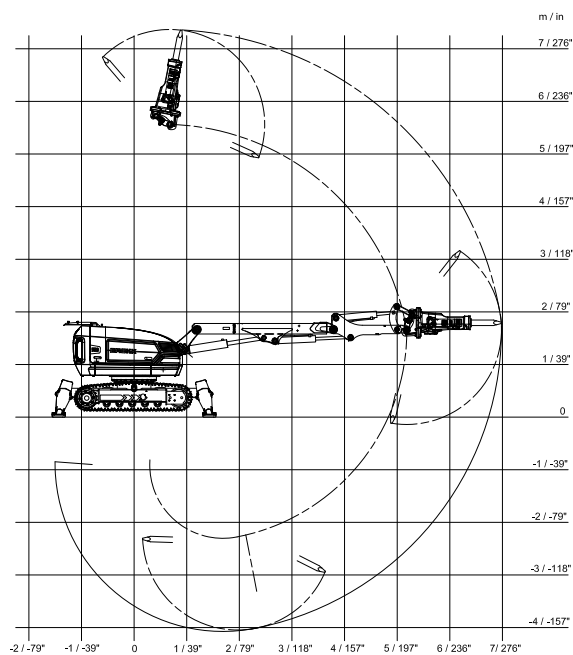
OPTIONALS

Protezione addizionale dei cilindri
Braccio heavy duty
Cingoli in gomma
Cingoli in acciaio
Flessibili resistenti al calore
Raffreddamento ad aria compressa per macchina
Raffreddamento ad aria compressa per martello
Piedi in acciaio
Abbattimento polvere con acqua atomizzata NOVITÀ!
Martello in pressione, antipolvere
Abbattimento polvere con acqua atomizzata sul martello
Funzione idraulica addizionale
Flessibile di scarico
Collegamento tramite cavo CAN
Contrappeso
Avvolgi cavo
Occhielli di sollevamento (punti di sollevamento senza occhielli sono sempre inclusi)
Avviso di movimento

DIMENSIONI

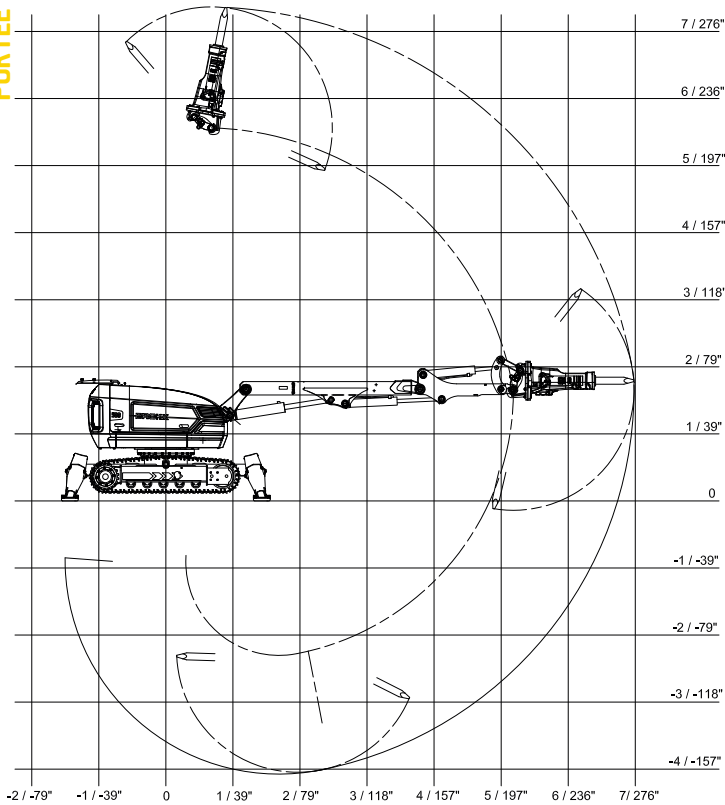


PORTATA

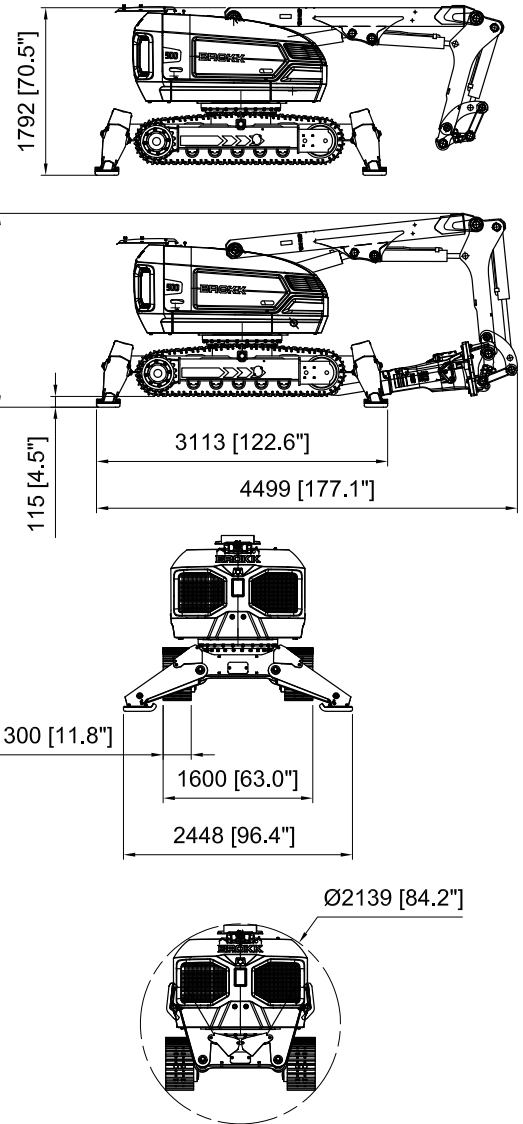


Tolleranze nei dati tecnici possono variare

PORTÉE



DIMENSIONS



CARACTÉRISTIQUES TECHNIQUES

Marteau hydraulique représenté dans les illustrations SB 702
 Brokk AB fournit sur commande des diagrammes de charge et de stabilité

Performances

Vitesse de rotation 16 s /360°
 Vitesse maxi. de transport 2,5 km/tim; 0,7 m/s
 Pente maxi. 30°

Système hydraulique

Volume du système hydraulique 130 l
 Type de la pompe P ompe à piston variable sensible à la charge
 Pression du système maxi. aux vérins, aux l'outil et aux moteurs 18,0 MPa
 Pression du système augmentée vers l'outil maxi. 24,0 MPa
 Débit maxi. de la pompe 50Hz 115 l/min
 60Hz 130 l/min

Moteur électrique

Type ABB
 Puissance nominale moteur* 30 kW
 Courant nominal* 55A
 Consommation de courant* 0-38,5 kW
 Dispositif de démarrage Soft start/Direct start

Système de commande

Dispositif de commande Radio-commande
 Transmission des signaux Numérique
 Transmission Câble/Radio

Poids

Poids de l'engin de base sans outil et équipement supplémentaire 5 200 kg
 Poids recommandé (max) de l'outil 700 kg

Niveau sonore

Niveau d'intensité sonore Lwa, mesuré conformément à la directive 2000/14/EC 100 dB(A)

* Valable pour 400V/50Hz

EQUIPEMENTS/OPTIONS

Bras

Protection (thermique et chocs) pour vérins C2 et C3
 Bras 3 puissant (avec marteau à connexion directe)

Châssis

Chenilles caoutchouc
 Chenilles métalliques

Protection thermique

Flexibles résistants à la chaleur pour marteau hydraulique
 Refroidissement à air forcé de la machine
 Refroidissement à air forcé du marteau Patins en acier pour démolition de four

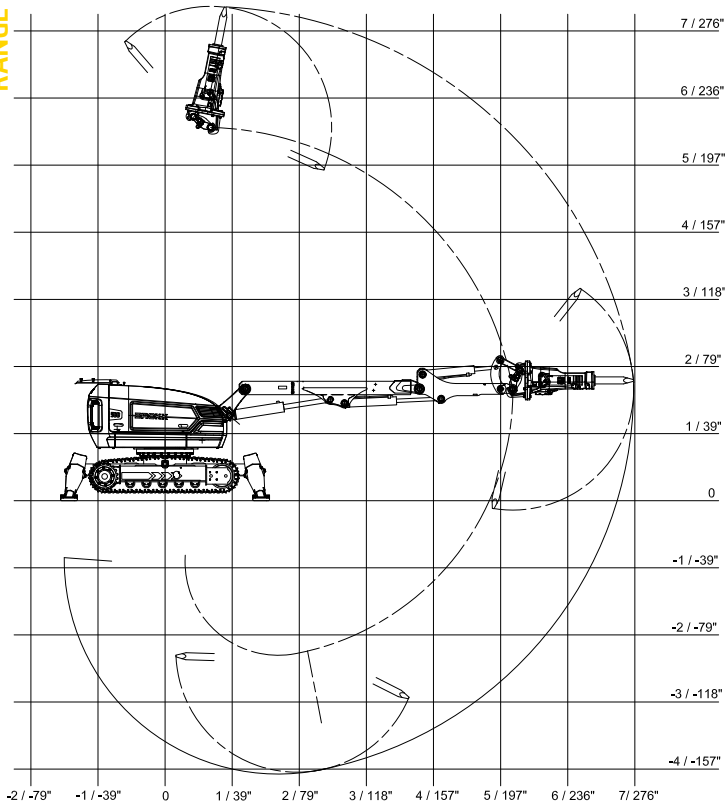
Autres options

Protection anti-poussière par induction d'air dans le marteau
 Pulvérisation d'eau sur Marteau pour limiter les poussières
 Contrepoids
 Enrouleur de câble 60 mts
 Fonction hydraulique supplémentaire
 Ligne de drain
 Connexion des outils par câble CAN

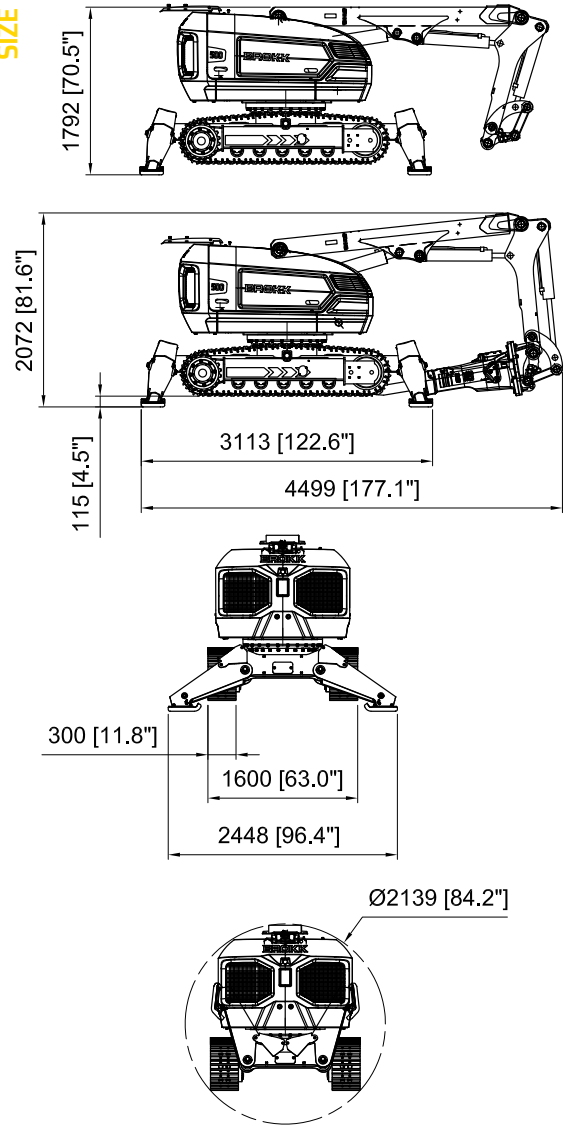
OUTILS



RANGE



SIZE



TECHNICAL DATA

Hydraulic breaker in illustrations BHB 705
 Load and stability diagram available on request

Performance

Slewing speed 16 sec/360°
 Transport speed, max. 2,5 km/h; 1.6 mph
 Climbing inclination, max. 30°

Hydraulic system

Hydraulic system capacity 145 l; 38 US gal
 Pump type Variable load-sensing
 System pressure 18,0 MPa; 2 611 psi
 Increased pressure to attachment 24,0 MPa; 3 481 psi
 Pump flow 50Hz 115 l/min; 30 US gal/min
 60Hz 130 l/min; 34 US gal/min

Power system

Power technology SmartPower
 Electric motor type ABB
 Power* 41 kW
 Recommended fuse size* 63 A
 Starting device Soft start/Direct start

Control system

Control type SmartRemote, portable control
 Signal code Digital
 Transfer Professional radio/Cable
 Range, radio Up to 300 m

Weight

Machine weight** 5 200 kg; 11 464 lbs
 Recommended attachment weight 700 kg; 1 543 lbs

Noise level

Sound power level L_{WA} *** 100 dB(A)

*Valid for 400V/50Hz and 440V/60Hz
 **Excluding options and attachment
 ***Measured according to directive 2000/14/EC, excl. attachment

OPTIONS

Arm System

Impact and heat protection for cylinder C2 and C3
 Heavy duty arm 3

Undercarriage

Rubber caterpillar tracks
 Steel caterpillar tracks

Heat resistance

Heat resistant hoses for hydraulic breaker
 Forced draft cooling of machine
 Forced draft cooling of breaker
 Steel pads for kiln demolition or furnace

Other options

Air flushing through breaker to protect from dust
 Water spray through breaker to bind dust
 Counter weight
 Cable reel with 60 m cable
 Extra hydraulic function
 Drainage hose
 CAN cable connection for tools
 Lifting eyes (regular lifting points are standard)

TOOLS

